

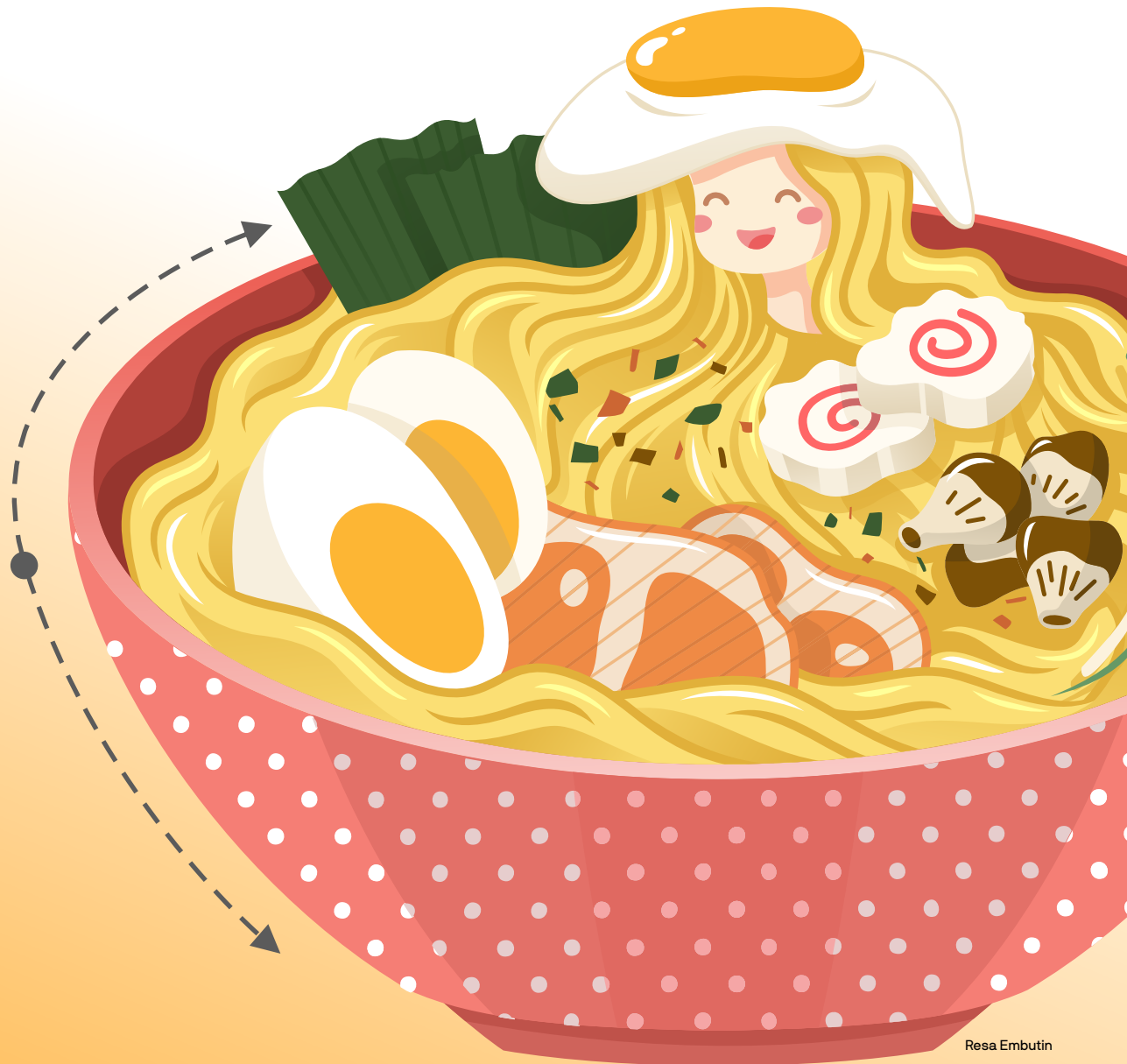


Bring ideas to life,

simply  
and stylishly.

Whether you're just starting out or you dabble in graphic design, CorelDRAW® Essentials is the toolkit you need to create gorgeous graphics with ease.

DESIGN & ILLUSTRATION | PAGE LAYOUT | PHOTO EDITING



Resa Embutin

# Why choose CoreIDRAW Essentials 2024?

If you're new to graphic design, this value-rich vector illustration software is your answer to creating posters, greeting cards, cards, calendars, and more, quickly and with total confidence.

## Fun, affordable graphic design

Design and lay out your DIY creative projects in a user-friendly environment that doesn't break the bank.

## Add your own unique touch

Turn your passion into eye-catching graphics with more creative control than you'll get with one-click design applications.

## Easy to learn

Grow your confidence as you design with a handy Hints docker that teaches you how to use tools as you select them.



Tom Veiga

## Who's it for?

### Occasional graphics users

This graphics software is a perfect solution for individuals looking to create visuals from time to time, such as greeting cards, calendars, and photo collages, for family and friends.

### Those just starting out

An excellent choice for those new to graphic design or just starting out who want to add their individual style to social media images, invites, and more.



Christian Held



Alex Souto

# What's new in CoreIDRAW Essentials 2024?

Our latest version delivers enhanced file import/export support, enabling seamless file interaction and use, as well as significant product quality improvements making it easier to bring your creative visions to life.

## What's included?

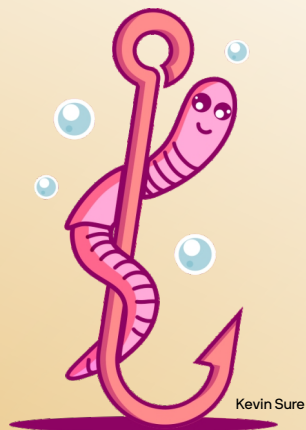
With the necessary tools for creating vector and bitmap-based visuals, CoreIDRAW Essentials has your casual graphics needs covered.

### CoreIDRAW Essentials

Find the vector illustration and page layout tools you need to get started with graphics and then some.

### Corel PHOTO-PAINT Essentials

Enhance your favorite images with just the tools you need for editing photos with ease.



## Key capabilities

### Vector illustration

Turn basic lines and shapes into works of art. Create curves with versatile shaping and drawing tools.

### Photo editing

Retouch and enhance your photos with Corel PHOTO-PAINT™ Essentials' layer-based photo editing tools.

### Page layout

Create layouts for invites, collages, multi-page designs, and more. Use rulers, grids and guidelines to help you organize objects and place them exactly where you want.

### Typography

Add type to any design with easy-to-use text tools. Play with text effects to make your final product pop.

# Get more graphic design power!

CorelDRAW Essentials 2024 is part of a powerful family of graphic design software. For more creative control and royalty-free content, like professionally designed templates, choose CorelDRAW Standard 2024.

For the ultimate in vector illustration and page layout, photo editing, typography, collaboration, and professional print capabilities, choose CorelDRAW Graphics Suite.

	CorelDRAW Essentials 2024	CorelDRAW Standard 2024	CorelDRAW Graphics Suite
Who's it for?	<ul style="list-style-type: none"> <li>Occasional graphics users</li> <li>Creative consumers</li> </ul>	<ul style="list-style-type: none"> <li>Graphics enthusiasts</li> <li>Home and micro businesses</li> </ul>	<ul style="list-style-type: none"> <li>Graphic design professionals</li> <li>Small businesses to large enterprises</li> </ul>
Computer platform	<ul style="list-style-type: none"> <li>Windows</li> </ul>	<ul style="list-style-type: none"> <li>Windows</li> </ul>	<ul style="list-style-type: none"> <li>Windows</li> <li>Mac</li> <li>Web</li> <li>iPad</li> </ul>
Included applications	<ul style="list-style-type: none"> <li>CorelDRAW® Essentials</li> <li>Corel PHOTO-PAINT™ Essentials</li> </ul>	<ul style="list-style-type: none"> <li>CorelDRAW® Standard</li> <li>Corel PHOTO-PAINT™ Standard</li> </ul>	<ul style="list-style-type: none"> <li>CorelDRAW®</li> <li>Corel PHOTO-PAINT™</li> <li>CorelDRAW.app™</li> <li>Corel® Font Manager</li> <li>CAPTURE™*</li> <li>AfterShot™ 3 HDR</li> </ul>

\*Only available with CorelDRAW Graphics Suite for Windows

For more information, contact your local reseller or visit [www.coreldraw.com/essentials](http://www.coreldraw.com/essentials)

## System requirements

- Windows 11 or Windows 10 (Version 21H2 or later), 64-bit, with latest Updates
- Intel Core i3/5/7/9 or AMD Ryzen 3/5/7/9/ Threadripper, EPYC
- OpenCL 1.2-enabled video card with 3+ GB VRAM
- 8 GB RAM
- 3 GB hard disk space for application and installation files
- Mouse, tablet or multi-touch screen
- 1280 x 720 screen resolution at 100% (96 dpi)
- For optimal performance, ensure you have the latest device drivers provided by the manufacturer.
- Internet connection is required to install and authenticate CorelDRAW Essentials and access some of the included software components, online features and content.



Corel, the Corel balloon logo, CorelDRAW, the CorelDRAW balloon logo, AfterShot, CAPTURE, CorelDRAW.app, Corel PHOTO-PAINT, and PowerTRACE are trademarks of Corel Corporation in Canada, the U.S., and/or elsewhere. Apple, macOS, iPad, and Mac are trademarks of Apple Inc. All other company, product and service names, logos, brands and any registered or unregistered trademarks mentioned are used for identification purposes only and remain the exclusive property of their respective owners. Use of any brands, names, logos or any other information, imagery or materials pertaining to a third party does not imply endorsement. We disclaim any proprietary interest in such third-party information, imagery, materials, marks and names of other. For all notices and information about patents please visit: [www.corel.com/patents](http://www.corel.com/patents)