

CorelDRAW[®]
Graphics Suite X8

Reviewer's Guide



Contents

1 Introducing CorelDRAW Graphics Suite X8	2
2 Customer profiles	6
3 What's included?	10
4 Top new and enhanced features	14
Jump in	14
Craft	16
Personalize	22
5 CorelDRAW Graphics Suite user favorites	28



Cuauhcihuatl
YAOCIHUATL
Ocelotl
cuauhtli

cihuatl = Woman Eagle Yaocihuatl = Woman Warrior Ocelotl = Jaguar cuauhtli = Eagle

Artwork by
Jesus Irvin
Herrera Aquino
Mexico

1

Introducing CorelDRAW® Graphics Suite X8

CorelDRAW® Graphics Suite X8 is a comprehensive graphics solution that helps you transform your creative energy into artwork that will delight and create lasting impressions across any medium. Its high-caliber tools, unparalleled power, and highly customizable workspace empower you to harness your creativity, design your way, and inspire your audience.

Whether you are a new user or have lived and breathed CorelDRAW for years, take advantage of a wide range of learning tools and a customizable environment to get started quickly and make the app uniquely your own. For anyone creating graphics on Windows, CorelDRAW Graphics Suite X8 is optimized to take full advantage of the latest generation of Windows 10 devices. And with an emphasis on productivity, CorelDRAW Graphics Suite X8 makes your workflow faster and simpler, all while giving you more control — especially when working with fonts or editing images and objects.

We welcome you to learn more about the power and creative possibilities of the new CorelDRAW Graphics Suite X8.

Jump in

One of the guiding principles in the development of CorelDRAW Graphics Suite X8 was ensuring that nothing ever impedes your creative confidence. With that in mind,

versatile resources that aim to inspire and educate are built right into the suite. Whether you're a first-time user, you're upgrading from an earlier version or you have experience with other graphics software, there are in-product learning tools designed for you. Case in point, the new Startup tours. This series of interactive tutorials reduces the learning curve so you can get up and running faster than ever before. What's more, the popular Hints docker has been enhanced to make it even easier to maximize the suite's tools and features as you work. And now accessible from the revamped Welcome Screen, the Discovery Center offers a collection of creative tips and tutorials for every learning style and skill level.

The technology that drives so much of the design world is evolving at an astonishing rate. CorelDRAW Graphics Suite X8 is designed to let you fully leverage these advancements. Whether it's the latest version of the world's most popular operating system, the most high-definition monitors, or advanced multi-monitor support, you can design with ease.

Craft

CorelDRAW Graphics Suite has long been the graphics software of choice with creative and production professionals because the unparalleled power of its toolset allows them to design with dexterity, speed, and confidence.

As much as CorelDRAW Graphics Suite hopes to inspire you, that relationship is a two-way street. Many new features were developed as a direct result of suggestions from users who depend on the suite every day. This invaluable feedback led to such workflow enhancements as the Font list box, which simplifies locating the perfect font for your project. New object-editing options — such as the ability to hide objects, copy and reuse curve segments, and select adjacent nodes —simplify and accelerate even the most complex designs. The enhanced Knife tool opens a world of creative possibilities by letting you intuitively and precisely split vector objects, text, and bitmaps. Corel® PHOTO-PAINT® X8 also rolls out a range of high-caliber photo-editing additions, including the Healing Clone tool for seamlessly removing blemishes from images, perspective distortion corrections, and a new Gaussian Blur lens.

Personalize

For every industry that relies on CorelDRAW Graphics Suite, there's a different workflow, each with different needs. Rather than force anyone to work a certain way, Corel encourages you to work in whatever way best suits you and your projects.

You can adapt your design space by customizing icon sizes or the color of the desktop and window borders. You can choose from a variety of UI arrangements designed for specific tasks, Lite workspaces designed to make each application's most commonly used tools more readily accessible, or classic X6 Inspired workspaces for longtime users who may prefer the suite's legacy

appearance. There are also a range of customization options to help you tailor the interface to suit your workflow. Because fonts are central to so many creative sectors, the new Corel Font Manager™ simplifies finding and managing fonts on your system. You can also enhance and tailor your workflow even more by choosing from a collection of creative tools available for download or purchase directly from within the suite.

Delight

CorelDRAW® Graphics Suite X8 has everything you need to deliver eye-catching professional-quality designs to any medium. Whether your work is destined for the web, social media, print ads, brochures, billboards or vinyl signs, the suite provides the flexibility and accuracy that you need for all types of projects.

One of the reasons that CorelDRAW Graphics Suite has long been a favorite with creative professionals is that it has always allowed them to focus on wowing their audience. Time spent tweaking color settings and dealing with file formats comes at the expense of what they'd really rather be doing — creating expressive, captivating designs. To that end, CorelDRAW Graphics Suite offers a color-management system that assures accurate color representation regardless of your level of expertise. Whether you're importing a client's mock-up, working with previous designs, or sending a project to a print shop or manufacturing facility, you can be certain that your colors are true. And with its industry-leading file format compatibility, CorelDRAW Graphics Suite X8

provides the flexibility that designers need for sharing their work. There's also a web-development tool, Corel® Website Creator™, that has dozens of templates so you can easily design, build, and maintain a web presence without having to learn how to code.

And when you could use some inspiration or advice, there's the CorelDRAW Community site. It's the place where users can get together to share and learn from others, discover what community members create, and fuel their inspiration.

Choose your purchase option

In the interest of user choice, we're offering several CorelDRAW Graphics Suite purchase options.

Perpetual License

At Corel, we strongly believe that you should not be forced into a rental model if you don't want it. For a one-time payment, a CorelDRAW perpetual license gives you the right to use the software forever, with no extra monthly cost. By purchasing a box, download version or volume license version of the product, you get access to the full benefits of a specific version, and there is no need for a permanent Internet connection. Perpetual licenses give you the option to pay for future major upgrades, only if you want them.

Subscription

A CorelDRAW® Subscription is an affordable way to stay up-to-date with the latest tools and enhancements of

CorelDRAW Graphics Suite. It offers a cost-effective alternative to paying the upfront cost of the software. Instead, you'll get a full, downloadable version of CorelDRAW Graphics Suite* that remains entirely functional for as long as your subscription is active. You decide how and when you want to use it. An annual plan offers an overall discount, with the option to auto-renew or end your subscription after the 12-month period.

You'll always be notified when the latest performance enhancements, updates and versions are available for download. Your subscription entitles you to the next major version upgrade for as long as your subscription is active.

Upgrade Program

The new CorelDRAW® Upgrade Program is the hassle-free way for designers to keep their toolbox up-to-date at the best price. If you own a version of CorelDRAW Graphics Suite with a perpetual license, you pay one affordable fee once a year, and you're assured of working with the latest design tools, new file compatibility, and the most current technology. And as long as your account is active, you'll automatically get the latest version of CorelDRAW Graphics Suite. Best of all, sign up once and forget about it. In addition, if your needs change, you will continue to own the last version you received through the upgrade program.

**A corel.com account and Internet connection are required to download and use the application and manage your subscription.*



2

Artwork by
Tomasz Mrozinski
Poland

Customer profiles

Graphics and creative professionals

Graphics and creative professionals in advertising and printing industries spend much of their time creating and editing graphics, working with text, and retouching photos.

These users frequently work on layout and design projects for print and the web, such as creating logos and multipage brochures. They seek innovative design tools that optimize their workflow and compatibility with commonly used file formats.

Production professionals

These users focus primarily on sign making, screen printing, engraving, and graphic design for print and the web. They frequently repurpose and combine such assets as illustrations, scanned logos, photos, clipart images, and fonts. They often repurpose content provided by clients in a variety of formats. They use this as a starting point, but spend the bulk of their time reworking and tweaking it. They pay particular attention to design optimization and output preparation. Their work is output to large-format printers, engraving machines, glass or vinyl cutters, and silk-screen or Direct to Garment (DTG) printers.

Occasional graphics users

Entrepreneurs and small to medium-sized businesses often create marketing and communications materials in-house. Often self-taught in graphic design, these occasional users modify existing artwork, retouch photos, and create ads, flyers, and other marketing collateral.

Business users in medium-sized to large enterprises strive to create professional, graphically rich projects ranging from sales presentations to web graphics. They spend considerable time reworking existing projects and retouching photos to use in their marketing and communications materials.

Hobbyists are self-taught and use graphic design software occasionally for creative projects — such as newsletters, calendars, banners, and photo layouts — for personal or community use.

Why do graphics professionals choose CorelDRAW Graphic Suite?

There are many reasons why CorelDRAW Graphics Suite is the software of choice in so many industries, but two really stand out: unparalleled typographical features and the ability to fine-tune your design environment with customization options and the support for the latest technology.

Typography

Whether your work is destined for the web, a digital sign, a billboard or print, chances are text will be a critical part of the design. Text is such an important element of a design because it can truly set the tone of a project. A font or text style chosen haphazardly can undermine an otherwise great piece of work, running counter to the rest of a design.

CorelDRAW Graphics Suite simplifies your typographic workflow by allowing you to manage your font collections and create new ones, choose the perfect font for a project, refine the look of text until it's just right, and ensure that there are no problems when handing off a design for printing. CorelDRAW Graphics Suite X8 introduces **Corel Font Manager**, a standalone font management application for finding, organizing, and previewing local fonts. It also provides easy access to online fonts on the Content Exchange. In addition to existing typographical features that have made the suite a favorite with graphics and production professionals,

enhanced searching and filtering features help you find fonts for any project faster than ever.

The **Insert Character docker** helps you quickly find a font's available glyphs, while the **Font Playground** lets you easily find the perfect font by comparing and adjusting a variety of text examples. **Font embedding** ensures that CorelDRAW documents can be viewed, printed, and edited exactly as designed. You can also access and preview advanced OpenType features for your fonts, including strong support for **Asian text**.

Flexible UI customization

When it comes to giving you the freedom to modify your design environment to your exacting standards, few applications come close to CorelDRAW Graphics Suite. Giving you the ability to design in a personalized creative environment has always been a hallmark of the suite. There are endless customization options that let you keep frequently used tools within easy reach and tailor the main applications to work the way you prefer. **Quick Customize buttons** make workspace customization fast and easy. And **icons have been redesigned, allowing you to scale them up to 250%**, so you can get more out of high-resolution displays. You can also pick the color of the desktop, toolbars, and window borders to best suit your projects. What's more, CorelDRAW has a **variety of workflow-specific workspaces** based on the recommendations of professional industry experts who use the suite routinely to arrange tools and features for specific tasks.

In this release, the suite has been **optimized for high resolution displays**, ensuring that user interface elements appear crisp and legible when displayed on high resolution monitors, including UltraHD 4K. **Advanced multi-monitor support** ensures that you can work in CorelDRAW and Corel PHOTO-PAINT across multiple monitors of varying DPI.



3

Artwork by
**Ximena Alejandra
Flechas Chaparro**
Brazil

What's included?

Applications

- **CorelDRAW® X8:** This intuitive vector-illustration and page-layout application meets the demands of today's busy graphics professionals and graphics non-professionals.
- **Corel® PHOTO-PAINT® X8:** This professional image-editing application lets you quickly and easily retouch and enhance photos.
- **Corel Font Manager™ X8:** This standalone font management application lets you find, organize, and preview local fonts, as well as online fonts on the Content Exchange.
- **Corel® PowerTRACE® X8:** This utility is embedded in CorelDRAW to help you quickly and accurately convert bitmaps into editable vector graphics.
- **Corel® CONNECT™ X8:** This full-screen browser lets you access the suite's digital content, the new Content Exchange, and search your computer or local network to quickly find the perfect complement for a project.
- **Corel CAPTURE™ X8:** This one-click utility lets you capture images from your computer screen.
- **Corel® Website Creator™*:** This application offers a fast and easy way to design, build, and manage websites.

Supporting applications

- **Barcode Wizard:** This wizard guides you through the generation of bar codes in a wide range of industry-standard formats.
- **Duplexing Wizard:** This wizard helps you optimize your projects for two-sided printing.
- **PhotoZoom Pro 4*:** This plug-in lets registered users export and enlarge digital images from Corel PHOTO-PAINT.
- **WhatTheFont:** This online font identification service is integrated with CorelDRAW.
- **Microsoft® Visual Basic® for Applications 7.1:** This integrated development environment includes 64-bit support and helps you streamline your workflow by automating tasks.
- **Microsoft® Visual Studio® Tools for Applications 2015:** This toolset includes the power of the .NET framework, so you can create time-saving macros to automate tasks and extend functionality.
- **GPL Ghostscript:** This feature lets you isolate and use individual elements of imported EPS files rather than only header images. It also improves the import of PDF files generated by third-party applications.

* *Application download requires Internet connection and an authenticated version of CorelDRAW Graphics Suite.*

Content

- 10,000 high-quality clipart and digital images
- 2,000 professional, high-resolution digital photos
- 1,000 OpenType® fonts
- 350 professionally designed templates
- 2,000 vehicle templates
- Over 1,000 fills, frames and patterns

Documentation

- Quick Start Guide
- Quick-reference card
- Help files

Training

- **New!** Interactive Startup tours
- **New!** Insights from the Experts
- **Enhanced!** Hints docker
- **Enhanced!** Discovery Center access from the Welcome Screen
- **Enhanced!** More than 5 hours of training videos, with new content
- Video Hints
- Tips & Tricks

Minimum system requirements

- Windows 10, Windows 8.1, or Windows 7 (32-bit or 64-bit editions), with latest updates and service packs
- Intel Core i3/5/7 or AMD Athlon 64
- 2 GB of RAM
- 1 GB of hard disk space
- 1280 x 720 screen resolution at 100% (96 dpi), 1920 x 1080 at 150%, and 2560 x 1440 at 200%
- DVD drive for installation by disc
- Multi-touch screen, mouse, or tablet
- Microsoft .NET Framework 4.6
- Microsoft Internet Explorer 11 or higher
- Internet connection is required to activate and validate CorelDRAW Graphics Suite, to receive product updates, and use online product features and content. The product can be used offline if you connect to the Internet at least once a month to validate your software license.



4

Artwork by
Joseph Diaz
USA

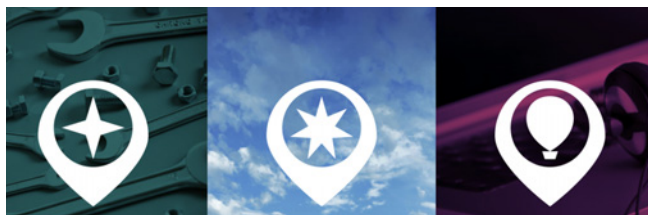
Top new and enhanced features

CorelDRAW Graphics Suite X8 is an intuitive and complete graphics solution that empowers you to make a major impact with your artwork.

Jump in

With a variety of in-product learning resources, it's never been easier for first-time users or experienced designers to jump in and quickly get started with CorelDRAW Graphics Suite. And with the ability to leverage the power of Windows 10 and use the newest monitors, you can take advantage of the latest technology to enrich your projects.

New! Interactive Startup tours: You can get to work faster and more efficiently thanks to a series of interactive Startup tours. Whether you are new to graphics software, an experienced user, or someone familiar with other graphics applications, there's a start-up tour to help you quickly get up to speed and take full advantage of the features and tools of CorelDRAW Graphics Suite X8.



*You can learn the basics, see what's new,
or transition to the suite.*



Give it a try

Taking an interactive tour

- 1 Click the **Welcome Screen** tab.
If the Welcome Screen is not active, click **Window** ▶ **Welcome Screen**.
- 2 On the Getting Started page, click **Tour New Features** in the **Take a Tour** area.

You can also launch this tour by clicking **Help** ▶ **Take a Tour** ▶ **Tour New Features**.

This tour is designed for users who are familiar with earlier versions of CorelDRAW Graphics Suite. When you start a tour, a sample drawing opens automatically. The steps in the tour are directly related to design elements in this file.

As you complete a stage of a tour, you can move to the next step by clicking **Okay!**. You can also navigate to a specific step in the tour by clicking the step's corresponding button at the bottom of the tour window.

If you want to pause a tour, click **Quit**, and click **Yes** in the dialog box that asks you if you want to save the results. To resume the tour, click the tour title, and click **Continue Progress** in the dialog box that appears.

Enhanced! Hints docker: The Hints docker is a hub of valuable learning resources designed to help reduce the learning curve for new users. It dynamically displays context-sensitive information on the currently selected tool and provides links to related information. Enhanced in CorelDRAW Graphics Suite X8, the Hints docker now gives you quick access to additional resources such as video hints, longer videos, and written tutorials, so you can learn more about a tool or feature without having to search.



The enhanced Hints docker makes it easier than ever to get up and running quickly.

New! User guides available as eBooks: The CorelDRAW X8 User Guide and Corel PHOTO-PAINT X8 User Guide are available as eBooks. Published to the EPUB and MOBI file formats, the eBooks bring the most comprehensive and up-to-date information about product features to your eBook reader. Following the user guides on an eBook reader saves you switching between program windows on your system, allows you to keep learning on the go, and ensures access to the

suite's Help files when you don't have Internet access. To access an eBook, sign in to your corel.com account, and click **Downloads** on **Your Account** page.

Enhanced! Discovery Center: The Welcome screen in CorelDRAW and Corel PHOTO-PAINT gives you quick and easy access to the Discovery Center. Aiming to inspire and educate, the Discovery Center provides a wide variety of creative tips and tutorials designed for every learning style and skill level. Whether you're a seasoned pro or just getting started, it will help you get the most out of CorelDRAW Graphics Suite.

New! Support for UltraHD 4K displays: An updated interface and support for 4K monitors means that you can comfortably view CorelDRAW and Corel PHOTO-PAINT on even the most high-definition monitors, including UltraHD. This allows you to edit photos at their native resolution and see the subtlest details in the image. And with more pixels at your disposal, you can open several windows side-by-side for an efficient workflow.

New! Advanced multi-monitor support: Support for Per-Monitor UI scaling and improvements to multi-monitor support allow graphics professionals to take advantage of the sharpness and fidelity of new High-DPI monitors and laptops while still using lower-DPI monitors to maximize design space (requires supported hardware and Windows 8.1 or later). This ensures that UI elements scale properly and appear crisp and legible on screens of all resolutions. For example, you can drag a

document out of the application window and place it within a second screen, dedicating one monitor to a drawing or image and the other to frequently used dockers and toolbars.

New! Windows 10 support: Thanks to our relentless pursuit of delivering the highest quality user experience, CorelDRAW Graphics Suite X8 is fully compliant with and certified for Windows 10. Corel delivers the same reliability and performance that users have come to expect when working on the world's most popular operating system.

New! Product Details page: The new Product Details page in the Welcome screen is your one-stop source for the latest on the suite and your user account. It provides important information about your product or subscription, account status, product updates, and the new Upgrade Program.

Craft

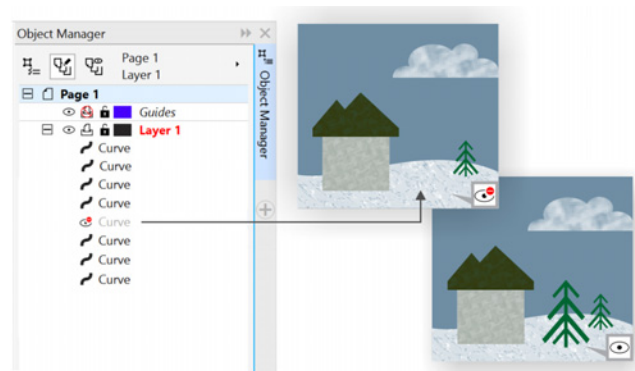
The high-caliber, intuitive features of CorelDRAW Graphics Suite X8 help graphics professionals maximize their creativity. From the enhanced Knife tool for precisely and intuitively splitting objects to a range of new image-editing additions to Corel PHOTO-PAINT, you can craft designs and refine photos with confidence and dexterity.

New! Font list box: Finding the right font for your project just got a lot easier in CorelDRAW and Corel PHOTO-PAINT. Using the new Font list box, you can quickly view, filter, and find the specific font you need. You can also now sort fonts based on weight, width, supported scripts, and more. Font-searching capabilities have also been enhanced, allowing you to use keywords to locate fonts. In addition, any folders or font collections added to Corel Font Manager are accessible from the Font list box in CorelDRAW and Corel PHOTO-PAINT, allowing you to use fonts that are not installed in your drawings and documents.



The Font list box helps you quickly find the perfect font.

New! Hiding and displaying objects: CorelDRAW X8 lets you hide objects and groups of objects so that only the sections you want or need to see in a project are displayed. When working with complex designs, the ability to hide a particular element in your drawing can be a great time-saver. It ensures that you don't inadvertently select and edit an object that you hadn't intended to work on, and it lets you experiment with your designs more easily.



You can hide individual objects or groups of objects on a layer without hiding the entire layer.

Enhanced! Knife tool: With the enhanced Knife tool, you can split vector objects, text and bitmaps along straight, freehand or Bézier lines. You can create a gap between the split objects or have them overlap. You can also choose whether to convert outlines into curve objects that can be manipulated or keep them as outlines. And if you're unsure, CorelDRAW can eliminate any guesswork by automatically choosing the option that best preserves outline appearance.


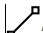
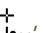
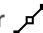


The enhanced Knife tool lets you split vector objects, text, and bitmaps along any path so you can work faster.




Give it a try

Splitting objects with the Knife tool

- 1 In CorelDRAW, click **File** ▶ **New**.
- 2 Create a couple of shapes using the **Ellipse** tool (press **F7**) or the **Rectangle** tool (press **F6**), and click colors on the color palette to apply fills to the shapes.
- 3 In the toolbox, open the Crop tools flyout, and click the **Knife** tool .
- 4 On the property bar, choose a split mode.
You can choose **2-Point Line** , **Freehand** , or **Bézier**  mode.
- 5 On the property bar, choose an outline option.

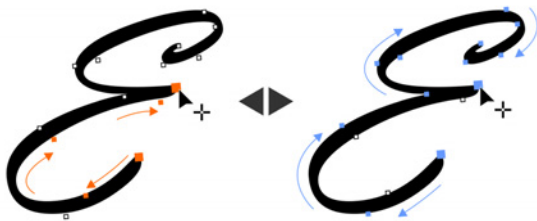
You can choose to convert lines to curves, keep them as outlines when splitting objects, or let CorelDRAW choose the option that best preserves the outline appearance.

You can create a gap or an overlap between the new objects by choosing an option from the **Cut span** list box on the property bar. You can set the size of the gap or the overlap in the **Width** box.

You can close the paths that result from splitting an object by clicking the **Auto-close on cut** button .

6 Drag across the objects to split them.

New! Selecting adjacent nodes: CorelDRAW X8 offers enhanced node selection that simplifies working with complex shapes. You can now select adjacent nodes on curves by using the Shape tool while holding down Shift. You can also change the direction in which the nodes are selected.



You can select several adjacent nodes (left), and you can change the direction in which the nodes are selected (right).

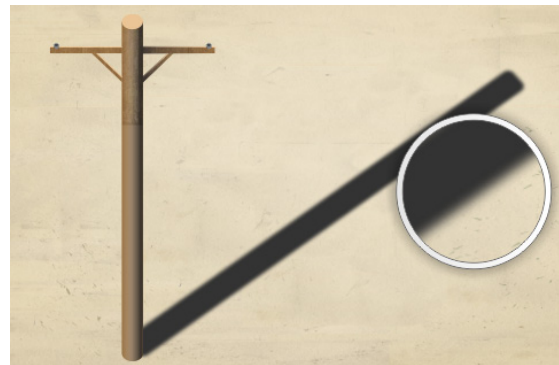
New! Copying curve segments: Another new time-saving enhancement in CorelDRAW X8 is ability to copy or cut a specific part of a curve segment. You can then paste it

as an object, making it easy to create new adjacent shapes with similar contours.



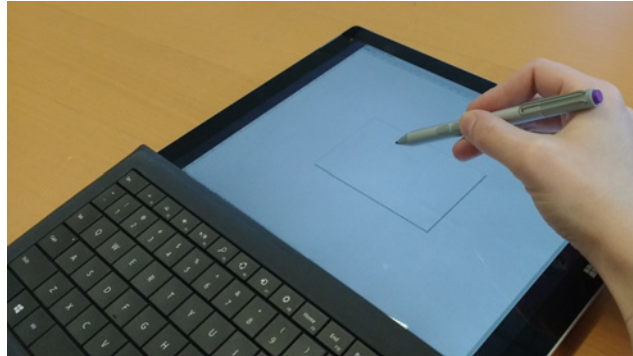
You can copy, paste, or duplicate pieces of existing curves, allowing you to reuse curve segments in your projects.

New! Drop shadows with Gaussian Blur feathering: Drop shadows are a great way to enhance elements in your designs. In CorelDRAW X8, you can create more realistic drop shadows that have natural-looking feathered edges in an instant thanks to the Feathering direction button on the property bar.



You can adjust feathering of drop shadow edges.

New! Real-Time Stylus (RTS) support: You can use your RTS-compatible pen tablet or device, including Microsoft Surface Pro 4 and Surface Book, to capture whatever inspires you on the fly. In addition to existing support of Wacom tablets, support for the Windows Real-Time Stylus delivers truly responsive pressure sensitivity and tilt and gives you full control of your brushstrokes in CorelDRAW and Corel PHOTO-PAINT. What's more, there's no stylus driver to install, so you can get to work right away.



You can use your RTS-compatible device to control your brushstrokes.



Give it a try


Using an RTS-compatible stylus with CorelDRAW X8




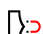

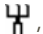

- 1 In CorelDRAW X8, click **Tools** ▶ **Options**.
- 2 In the **Global** list of categories, click **Pen Settings**.

- 3 Enable the **Real-Time Stylus** option.

When you use a pressure-sensitive stylus or pen tablet, the amount of pressure that you apply controls the width of your strokes. Each person uses a different pressure level in a stroke, and you can set CorelDRAW to match your stroke strength by specifying pen settings.

Proper pen settings are particularly useful if you have a light touch. If a light stroke leaves no trace, adjusting pen settings can increase sensitivity for specific tools.

- 4 Using your stylus or digital pen, apply at least three strokes in the window in the Pen Settings page, building from the lowest to the highest pressure.
- 5 In the toolbox, click the **Artistic Media Pressure** tool , and apply a few brushstrokes in the drawing window.

You can also use the pressure of your pressure-sensitive pen with **Eraser** tool , **Smear** tool , **Twirl** tool , **Attract** tool , **Repel** tool , **Roughen** tool , or **Smudge** tool .

New! Healing Clone tool: It's easier than ever to ensure that your photo subjects always look their best thanks to the new Healing Clone tool. It discreetly removes unwanted spots and imperfections from an image by painting with sampled texture and matching it to the color of the area that you're retouching. In a few clicks, you can seamlessly repair and blend a blemish or scar into the rest of the photo.




The Healing Clone tool helps you refine your photos by painting with sampled texture.



Give it a try

Fixing imperfections with the Healing Clone tool

- 1 In Corel PHOTO-PAINT, open an image.
- 2 In the toolbox, open the Touch-up tools flyout, and click the **Healing Clone** tool .

You can also activate the Healing Clone tool with a keyboard shortcut by pressing **O**.

You can adjust settings for the Healing Clone tool to work with more precision. On the property bar, you can set the nib's size or shape, and specify the brushstroke's transparency or feathering.

You can also adjust the nib size on fly by holding down **Shift** and dragging.

- 3 Set a source point by clicking an image area that contains the texture that you want to use to retouch an unwanted area.

The source point brush is marked by a crosshair. You can reset the source point by right-clicking any area of the image.

- 4 As you move the cursor away from the source point, you'll see the target brush, which applies the sampled texture and matches it to the color of the surrounding area.
- 5 Drag across the area that you want to cover.

The source point brush moves relative to the target brush as you drag across the image. You can use the same source point for subsequent brushstroke by holding down **Shift+Alt** as you drag.

Enhanced! Correcting perspective distortions: With the enhanced Straighten Image dialog box in CorelDRAW and Corel PHOTO-PAINT, you can correct perspective distortions in photos that have straight lines and flat surfaces. Now in a few clicks, you can easily fix photos of buildings, landmarks, or objects that appear in the wrong perspective or that were taken from an angle other than directly in front.



You can quickly correct perspective distortions in photos.

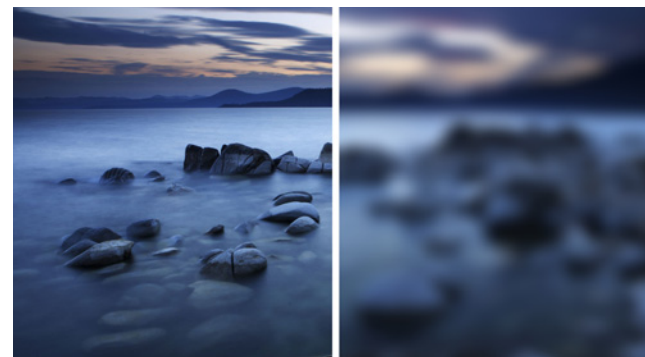


Give it a try

Correcting perspective distortion

- 1 In Corel PHOTO-PAINT, open an image.
- 2 Click **Adjust ▶ Straighten Image**.
- 3 In the Straighten Image dialog box, move the **Vertical Perspective** slider to the left until the image appears as if it had been captured straight on.
- 4 To crop and resample the corrected image to its original size, enable the **Crop** check box, and then enable the **Crop and resample to original size** check box.
- 5 Click **OK**.

New! Gaussian Blur lens: The Gaussian Blur special effect in Corel PHOTO-PAINT is now available as a lens, so you can blur images without overwriting the original image. When you create a lens, the changes you make are non-destructive, so any edits are displayed on the screen through the lens rather than applied to the image pixels. The lens is created as a separate object on a layer above the image background so you can edit the lens and the background image separately, maintaining the original's data and quality.




You can blur an image without overwriting it.



Give it a try

Applying a Gaussian Blur lens

- 1 In Corel PHOTO-PAINT, open an image.
- 2 Click **Object ▶ Create ▶ New Lens**.
You can also create a lens by clicking the **New Lens** button  in the Object Manager docker. If the Object Manager docker is not open, click **Window ▶ Dockers ▶ Object Manager**.
- 3 In the New Lens dialog box, choose **Gaussian Blur**, and click **OK**.
- 4 In the Gaussian Blur dialog box, experiment with the **Radius** slider.

As you move the slider to the right, you increase the blurring of the focus of the image according to Gaussian distribution, which spreads the pixel information outward using bell-shaped curves to produce a hazy effect.

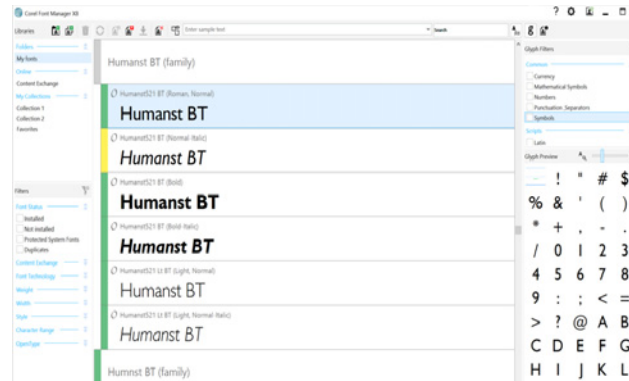
Personalize

Every creative professional has a way of working that's as unique as the designs that they create. With that in mind, CorelDRAW Graphics Suite X8 encourages you to work in whatever way best suits you and your projects. Customizable icon sizes and UI border colors, a new font-management application, and the ability to expand your collection of creative tools from within the suite ensure that you can adapt your workspace to your needs.

New! Corel Font Manager: When the number of fonts on your system become less of a benefit and more of a hassle, Corel Font Manager is the answer. It lets you easily handle, organize, and explore your typeface and font collections by giving you the tools to control every aspect of your typography workflow. Whether you want to find fonts for your projects, organize fonts for easy access, or manage unneeded fonts, Corel Font Manager has the tools you need. It lets you access online fonts from the Content Exchange, which you can install or download to use later. You can browse and search online and local fonts, preview font glyph sets, add custom font collections, and more.

When you add folders and create collections, all your fonts, including ones that aren't installed, become accessible from the Font list box in CorelDRAW and Corel PHOTO-PAINT. This means that you can use fonts that are not installed in your drawings and documents. In addition, any collections that you create appear as

font filters in the Font list box of the main applications, so you can filter fonts to show only the fonts included in specific collections.




The new Corel Font Manager simplifies exploring, organizing, and managing your typeface and font collections.



Give it a try

Searching for a font

- 1 Click the **Application launcher** button  on the standard toolbar, and then click **Corel Font Manager**.
Corel Font Manager, a standalone font-management application, opens.
- 2 In Corel Font Manager, click **Content Exchange** in the Libraries pane to display online fonts that are provided by Corel and are available for download.
- 3 Type **Humanst** in the **Search** box.
Fonts that match this search term appear in the Preview pane.

New! Fully customizable UI: CorelDRAW Graphics Suite X8 offers more UI customization options than ever before, allowing you to tailor your design space to create a unique work environment. Newly redesigned icons permit scaling up to 250%, and you can choose from a variety of colors for the application background by choosing a theme.



You can fully customize your design space to your needs.

New! Customizing desktop color: CorelDRAW Graphics Suite X8 offers flexible desktop color scheme options. You can change the color of the area surrounding the drawing page in CorelDRAW or the image in Corel PHOTO-PAINT to set up the optimal environment for each project, reduce the overall workspace contrast, or increase the legibility of design elements.

New! Customizing window border color: You can customize the color of window borders in CorelDRAW and Corel PHOTO-PAINT to match your personal

preference. If you use both applications simultaneously, you can set different border colors for each, which lets you quickly identify them when switching programs.



Give it a try

Customizing the UI

- 1 Click **Tools** ► **Options**.
- 2 In the **Workspace** list of categories, click **Appearance**.
- 3 In the **Size** area, move the slider to the right for larger UI items, and to the left for smaller UI items.

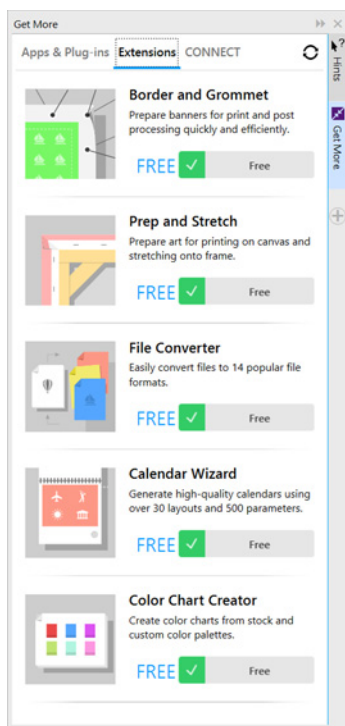
The scaling level is relative to the scaling level of the operating system. The default setting is 100%, which means that UI items in the application appear the same size as similar UI items in the operating system. Scaling by 200% makes the application UI items appear twice as large as the UI items of the operating system.

- 4 In the **Color** area, choose an option from the **Theme** list box.

To make the workspace lighter or darker, you can choose one of the following themes: **Light**, **Medium**, or **Dark**.

- 5 To change the border color of the application window and dialog boxes, open the **Window border** color picker, and choose a color.
- 6 To change the color of the area surrounding the drawing page, open the **Desktop** color picker, and choose a color.

New! Get More docker: You can expand your collection of creative tools by downloading applications, plug-ins, and extensions directly from within CorelDRAW and Corel PHOTO-PAINT. You can download your free license of Corel Website Creator, purchase AfterShot Pro for the ultimate RAW workflow, experience Corel ParticleShop for amazing bitmap effects, and more.




The Get More docker lets you expand your collection of creative tools directly from within CorelDRAW Graphics Suite X8.



Give it a try

Downloading apps and extensions from within CorelDRAW or Corel PHOTO-PAINT

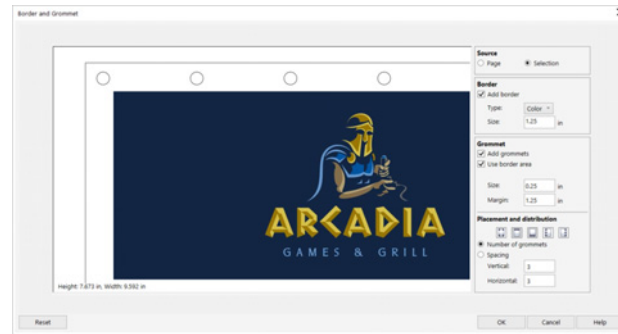
Note: You must be online and signed in to your corel.com account to download apps from within the main applications.

- 1 On the standard toolbar, click the **Search Content** button  to open the Get More docker.
- 2 Click **Apps & Plug-ins**, and click **Corel Website Creator**.
This application offers a fast and easy way to design, build, and manage websites.
- 3 Click **Download**.
- 4 Click **Extensions**, and click **Border and Grommet** and **Prep and Stretch**.
- 5 Click **Download**.

New! Border and Grommet dialog box:

CorelDRAW X8 accelerates the workflow of production professionals with the Border and Grommet dialog box, which simplifies preparing banner designs for printing. It has intuitive controls for precisely creating the perfect border for the job, whether it's stretching or mirroring the document edges or defining a color. This feature also simplifies adding grommets, which are rings or edge strips inserted into holes through thin material used to insert ropes and properly hang a banner. The Border and Grommet dialog box also gives you the flexibility to

create a banner from entire active page or just selected objects.



The new Border and Grommet dialog box lets you create a banner from a page or from selected objects on a page.

New! Prep and Stretch docker: One of the best ways to show off a great photo is to print it on canvas. With the Prep and Stretch docker in Corel PHOTO-PAINT X8, you can prepare your photos and images for canvas printing in three easy steps. By resizing, fine-tuning, and stretching the image, you can achieve the perfect composition for your wall art.



You can easily turn an image into a piece of wall art.

Enhanced! Image opening options: So you can set up your workspace in the way that best suits your style, Corel PHOTO-PAINT offers options for how your photos open. You can now have a number of documents visible simultaneously in floating windows. Or if you want to focus on one image at a time, you can open files in a the default tabbed view.

New! Community website for developers: With support from the new Developer Community site, you can create your own automation tools. There's a variety of useful resources, including in-depth programming articles and code samples, which can help you automate tasks with macros and create custom features. And when you have questions, you can turn to a community forum, knowledge base, or the FAQ page.

For information, visit www.community.coreldraw.com/sdk.



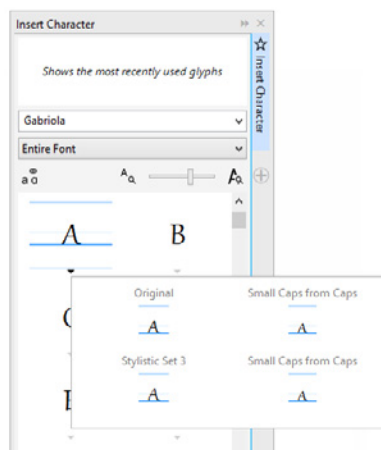
5

Artwork by
Jesus Peña
Venezuela

CorelDRAW® Graphics Suite user favorites

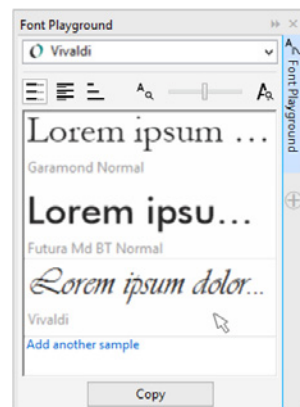
CorelDRAW Graphics Suite users continue to enjoy many of the following features that have been cornerstones of the suite for years.

Special characters and glyphs: The Insert Character docker presents all characters and glyphs associated with a selected font, making it easy to find these items and then insert them in your documents. Available in both CorelDRAW X8 and Corel PHOTO-PAINT X8, the docker includes a filtering option that lets you display only the character subsets that you want. For example, you can choose to display only the Cyrillic characters for a selected font.



You can quickly find a font's available characters and glyphs by using the Insert Character docker.

Font Playground: In both CorelDRAW X8 and Corel PHOTO-PAINT X8, the Font Playground docker offers an easy way to browse, experiment with, and choose the perfect font. You can easily add sample text to view its appearance in different fonts, and a handy Zoom slider lets you quickly adjust the size of sample text. With a single click, you can also choose whether the sample text appears as a single line, multiple lines, or a cascading series of increased sizes. The Font Playground also provides access to advanced features within OpenType fonts. If a text sample uses an OpenType font, and the selected characters have OpenType alternates, simply select the text to display the Interactive OpenType arrow and then choose which features to apply.



Lorem ipsum

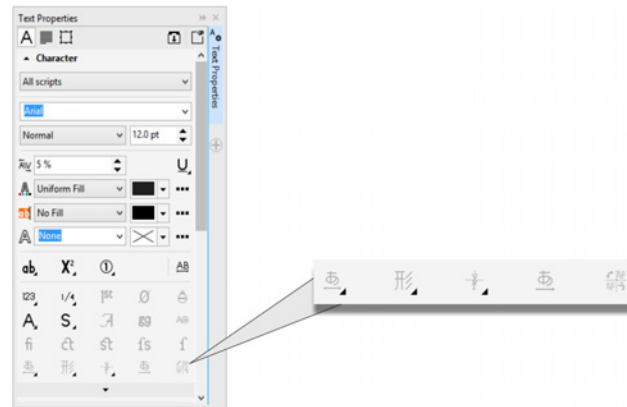
Lorem ipsum dolor sit amet. Duis consetetur sit ut justo. Esse feugait et dolore sadipsicing eos sed magna. Ut dui mazim kasd adipiscing eum ut molestie. Sit ipsum voluptua vero sanctus eirmod. Justo cilita ipsum magna Ut dui mazim kasd. Esse feugait et dolore sadipsicing eos sed.

With the Font Playground, you can easily find the perfect font by comparing and adjusting a variety of text samples.

Font embedding: You can embed fonts when you save CorelDRAW documents so that recipients can view, print, and edit the document exactly as designed. This is especially useful when sending a CorelDRAW file to a print shop, ensuring that the document can be viewed and printed accurately.

CorelDRAW X8 respects any restrictions encoded with each font, so a font must support embedding to be saved with the document. While some fonts cannot be embedded, most will support embedding for either print and preview, or for editing.

OpenType support for Asian text: While working with Asian text, you can use advanced OpenType typography features, such as widths, forms, vertical metrics, kana glyph alternatives, and vertical alternates and rotation.

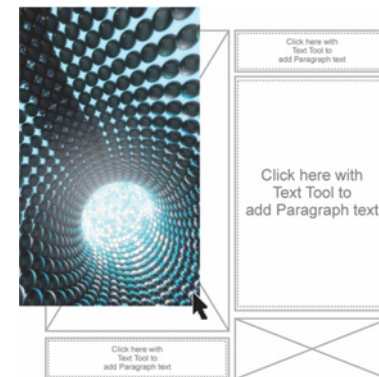


You can access advanced OpenType features for Asian text.

Interactive OpenType: With the Interactive OpenType feature enabled, CorelDRAW will suggest eligible features contained in OpenType fonts that you can apply to your selected text.


Fit text to path: Both CorelDRAW and Corel PHOTO-PAINT let you add text along the path of an open object (for example, a line) or a closed object (for example, a circle). You can easily adjust the position of the text in relation to the path.

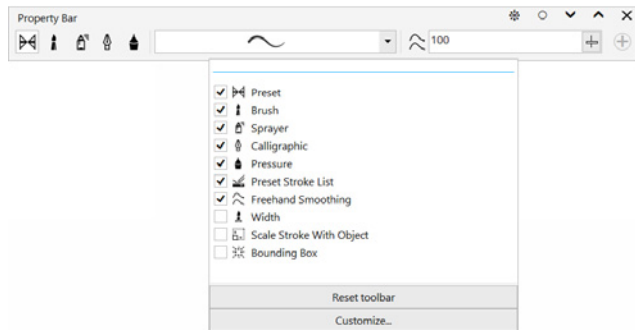
Interactive frames: You can efficiently generate mock-ups and preview layouts by using interactive placeholder frames. You can drag content over a PowerClip frame, and choose whether to add the content or replace existing frame content. With PowerClip frames, you can specify centering the content within the frame or scaling the content to fit proportionally within the frame. Plus, you can create text frames from any closed curve object, and you can edit the frame to take on any shape imaginable.



The empty PowerClip feature helps you visualize a layout before adding content.

Workspace selection: The Welcome Screen includes a **Workspace** tab, which lets you choose from a variety of workspaces that were designed for different proficiency levels and specific tasks. For example, there are Page Layout and Illustration workspaces, a classic option for longtime users, as well as a Lite option for new users.

Simple customization: The toolbox, docker space, and property bars contain handy **Quick Customize**  buttons, which will help you tailor the interface to suit your workflow. Available in both CoreDRAW X8 and Corel PHOTO-PAINT X8, these buttons offer a faster and more convenient way to add dockers to your workspace, add or remove tools from the toolbox, and add or remove items from a property bar.



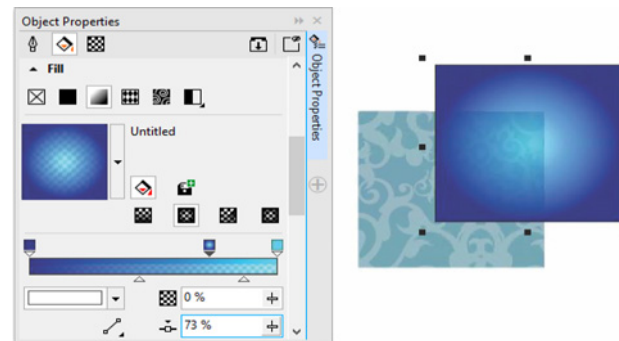
The Quick Customize buttons make workspace customization fast and easy.

Default and X6 Inspired workspaces: The default workspaces for CoreDRAW X8 and Corel PHOTO-PAINT X8 offer an intuitive and efficient configuration of tools, menus, status bar, property bars, and dialog boxes. Plus,

the classic X6 Inspired workspaces are still included for longtime users who may prefer the suite's legacy appearance. There are also Adobe Illustrator and Adobe Photoshop workspaces, which will help new users get up to speed within a familiar environment.

Fountain fills: You can create elliptical and rectangular fountain fills, apply transparency to individual color nodes within a fountain fill, repeat a fill within a filled object, adjust a fill's angle of rotation, and smooth the blend transition of a fountain fill.

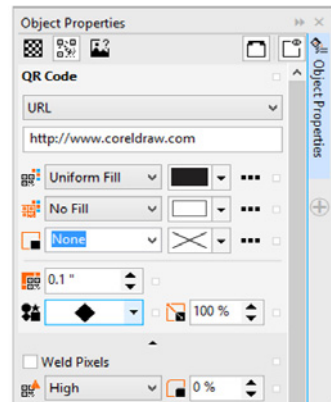
With CoreDRAW X8, you can apply and adjust fountain fills more quickly, accurately, and creatively by using the interactive controls in the Object Properties docker or the Edit Fill dialog box. In Corel PHOTO-PAINT X8, the Edit Fill dialog box provides quick access to all available controls for adjusting fountain fills.



The Object Properties docker provides interactive controls for applying and adjusting fountain fills.

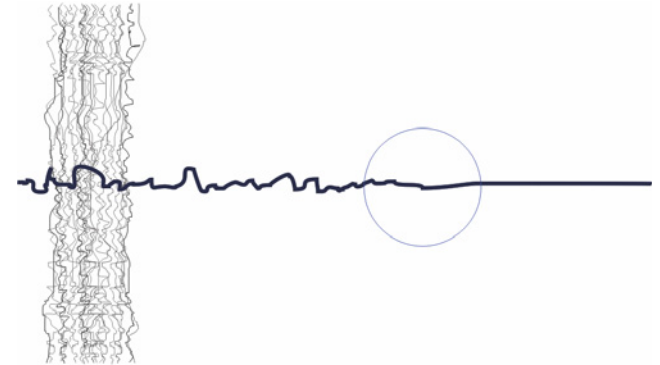
QR codes: With CorelDRAW X8, you can create unique, artistic, and scalable QR codes by adding text, colors, and images. Popular in consumer advertising and packaging, QR codes give smartphone users quick access to a brand’s website, which can offer additional product information. The Object Properties docker makes it easy to customize a QR code, and you can create an object style that saves a fixed appearance for the QR code to enable quick and easy reuse.

You can change the shape, outline width, color, and fill type of the QR code pixels, change the background color and fill type, and more. You can also choose which information to include in the QR code, such as URL, email address, phone number, SMS, Contact, Calendar event, and Geo location. There’s also a Validate option, which analyzes the QR code to ensure it can be read by QR code readers, smartphones, and scanners.



CorelDRAW X8 provides extensive options for the creation of QR codes.

Smoothing objects: The Smooth tool lets you remove jagged edges and reduce nodes in curve objects. You can control the smoothing effect by varying the size of the brush nib, the speed at which the effect is applied, and by using the pressure of your digital pen or stylus.



The Smooth tool helps you to remove jagged edges and reduce nodes in curve objects.

Liquid tools: Corel PHOTO-PAINT X8 has four pressure-sensitive Liquid tools — Smear, Attract, Repel, and Twirl — that offer creative options for retouching photos. You can use these tools to reshape specific image areas to produce unique artistic effects. Each tool responds to the pressure of your digital pen or stylus, and provides options that help you control the intensity of the effect.

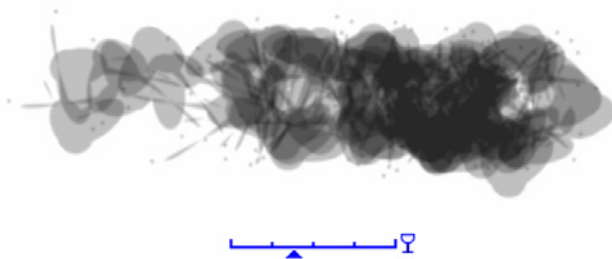
With the **Liquid Smear** tool, you can push pixels around an image area to produce distortion effects. The **Liquid Twirl** tool produces twirl effects from image areas. The

Liquid Attract and **Liquid Repel** tools pull pixels toward or push pixels away from an image area.



Corel PHOTO-PAINT X8 includes pressure-sensitive Liquid tools that provide creative options for retouching photos.

Interactive brushstroke transparency and feathering: With Corel PHOTO-PAINT X8, you can use modifier keys to interactively adjust the transparency and feathering of brushstrokes. This lets you apply transparency and feathering on the fly, and works with the Eraser, Red-eye removal, Clone, Touch-up brush, Paint, Effect, Image Sprayer, Undo brush, and Replace color brush tools.



You can apply brushstroke transparency and feathering interactively.

Special effects: Corel PHOTO-PAINT X8 has a variety of camera effects, such as Bokeh blur, Colorize, Sepia Toning, and Time Machine to help you recreate historic photographic styles and give your images unique visual appearances.

With the Bokeh blur effect, you can define an area of focus and leave the rest of the image out of focus. You can create a duotone image by using the Colorize effect to replace all colors in an image with a single hue. The Sepia Toning effect simulates a photo taken with sepia film, which is similar to grayscale except with brown tones. And with the Time Machine, you can choose from seven historic photography styles ranging from 1839 to the 1960s.



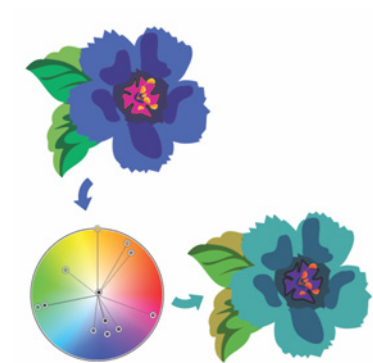
Corel PHOTO-PAINT X8 provides camera effects to help you create images with unique visual appearances.

Content Exchange: The Content Exchange is an online repository that integrates with Corel CONNECT and the suite's applications, making it quick and effortless to access and share clipart, photos, fonts, frames, vector and bitmap patterns, and image lists with a community of other users.

Search capability in Corel CONNECT: You can quickly leverage content assets from online sources by typing a web address in the Corel CONNECT search toolbar. You can also search the Content Exchange, iStock, Fotolia, Flickr, Microsoft OneDrive, or a folder path for local or network content.

Color harmonies: You can group a document's color styles into a color harmony, which makes it quick and easy to produce iterative designs with varying color schemes. A color harmony combines two or more color styles into a hue-based relationship. You can then modify them collectively, altering color composition of your artwork in one step.

In addition, you can also create a special type of color harmony called a gradient, which consists of one master color style and a number of varying shades of that color. When you alter the master color, the gradient colors automatically adjust to the same degree that the master color was altered. This is especially useful when outputting multiple color variations of the same design.



Color harmonies make it easy to change combinations of colors.

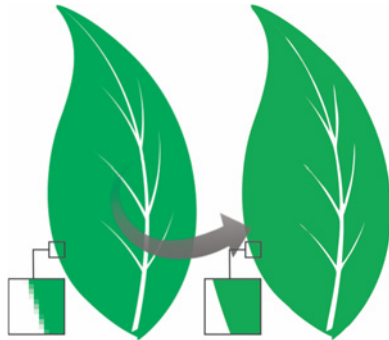
Smart Carver™: In Corel PHOTO-PAINT, you can use the Smart Carver to easily remove unwanted areas from a photo and simultaneously adjust the photo's aspect ratio. The versatile Object Removal brush lets you choose to paint either the area of the photo you want to preserve or the area that you want to remove. When adjusting aspect ratio, the Smart Carving presets let you contract or expand a photo's background vertically and horizontally without distorting the photo.



The Smart Carver makes it easy to remove unwanted areas and adjust the photo's aspect ratio.

Create clip mask: With clip masks in Corel PHOTO-PAINT, you can adjust the properties of a group of objects in a way that is non-destructive to the individual objects within the group. For example, you can adjust transparency levels for the whole group without altering the pixels of the individual objects.

Corel PowerTRACE: This utility lets you quickly and accurately convert bitmaps into editable and scalable vector images, which is especially useful for design work that's based on existing artwork. PowerTRACE generates a color palette, which lets you instantly edit, merge, or delete specific colors used by the original artwork.



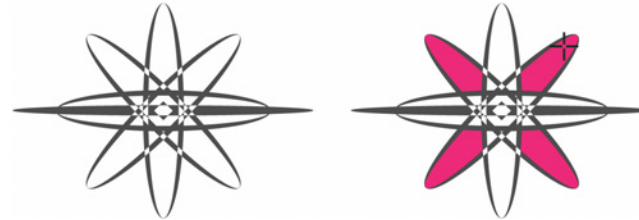
You can use PowerTRACE to convert bitmaps to vectors.

Cutout Lab: This intuitive utility simplifies the process of accurately cutting out specific areas of an image. For example, you might want to extract a specific part of a photo into its own object.

Image Adjustment Lab: This time-saver makes it easy to correct common color balance and tone problems from a single dialog box.

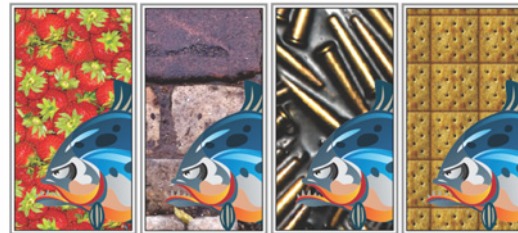
Smart Fill tool: This convenient tool detects the edges of an area and creates a closed path so that the area can be filled. By using the Smart Fill tool, you can fill practically anything. For example, if you draw a freehand

line that crosses over itself to create loops, the Smart Fill tool will detect the edges of the loops and fill them.



The Smart Fill tool helps you fill enclosed areas.

Interactive Fill tool: You can add uniform, linear, elliptical, conical, rectangular, two-color pattern, vector pattern, bitmap pattern, texture, and PostScript fills by using the Interactive Fill tool.

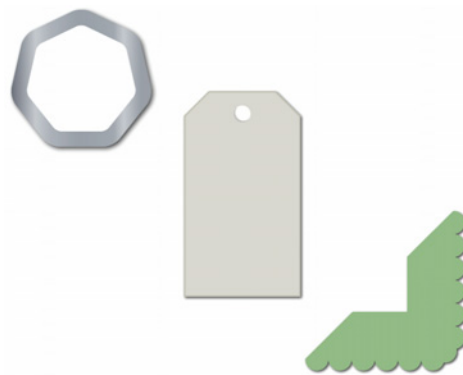


The Interactive Fill tool helps you apply bitmap pattern (top row), fountain, vector pattern (bottom row), and two-color fills.

Mesh Fill tool: You can create unique effects by filling an object with a mesh fill. For example, you can create smooth color transitions in any direction without having to create blends or contours. The Mesh Fill tool lets you specify the grid's intersecting points as well as the number of columns and rows in the grid.

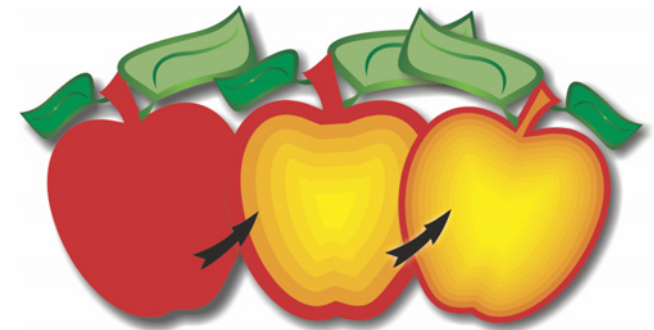
Dimension tools: CorelDRAW includes several dimension tools that make it easy to detail precise measurements in your design. For example, dimension lines can be used to display the size of objects, or the distance or angle between objects. You can choose from angular, parallel, horizontal, vertical, or segment dimension tools.

Fillet / Scallop / Chamfer docker: This docker makes it easy to shape the corners of curve objects. Filletting produces a rounded corner; scalloping rounds and inverts the corner to create a notch; and chamfering bevels the corner so that it appears flat.



You can fillet, chamfer, or scallop the corners of objects.

Contour tool: This tool helps you create interesting 3D effects and cuttable outlines for output to devices, such as plotters, engraving machines, and vinyl cutters. When you contour an object, you add evenly spaced concentric shapes that progress to the inside or the outside of the object's borders.



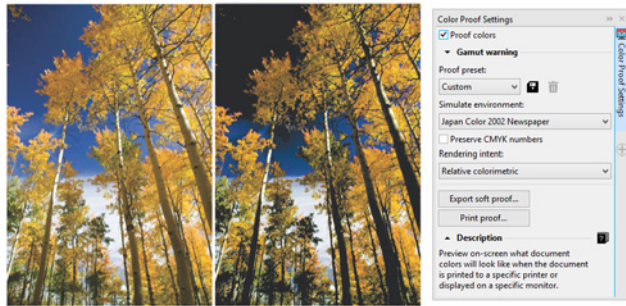
The Contour tool helps you create 3D effects.

Document palette: When you start a new CorelDRAW document, a custom color palette is automatically created. The palette is then saved with your file, which gives you quick access to the project's specific colors in the future.

Artistic Media: The Artistic Media tool gives you access to the Brush, Sprayer, Calligraphic, and Pressure tools. With each of these tools, you can create pressure-sensitive lines which vary in thickness.

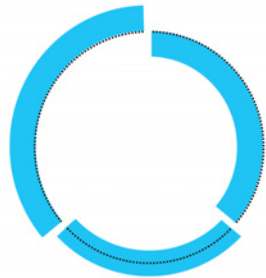
Color Proof Settings docker: This docker helps you efficiently prepare artwork for various output devices.

You can save presets, choose from a list of output devices to preview your output, export soft proofs for client approval, and print hard proofs from the docker.



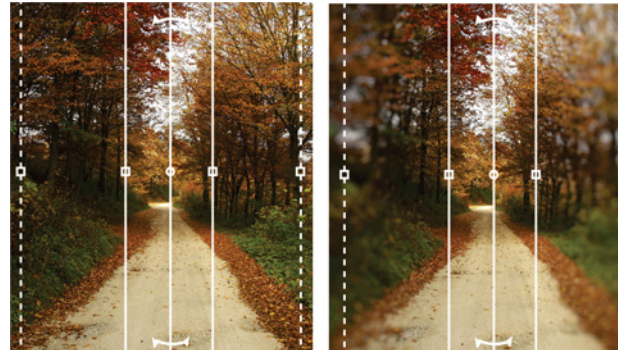
You can prepare artwork for various output devices with the Color Proof Settings docker.

Outline Position: With CorelDRAW X8, the Outline Position options help you create objects with more precise sizes. You can specify whether an outline is positioned inside the object, outside the object, or an equal combination of both. By positioning an outline inside an object, you can more easily create layouts with specific sizes because the outline will be rendered within the object's original dimensions.



You can specify an outline's position so that it appears outside (left), inside (right), or centered (middle).

Planar Mask tool You can use the Planar Mask tool in Corel PHOTO-PAINT X8 to define a feathered editable area along parallel lines. When combined with a blur effect, you can simulate depth of field, giving focus to a particular object while blurring areas outside the planar mask. You can modify the effect of the planar mask by moving or rotating the lines, and you can also use mask modes with the Planar Mask tool.



The Planar Mask tool lets you define a feathered editable area along parallel lines.

About Corel

Corel is one of the world's top software companies providing some of the industry's best-known graphics, productivity and digital media products. Boasting the most comprehensive portfolio of innovative software, we've built a reputation for delivering solutions that are easy to learn and use, helping people achieve new levels of creativity and productivity. The industry has responded with hundreds of awards for innovation, design, and value.

Used by millions of people around the world, our product lines include CorelDRAW® Graphics Suite, CorelDRAW® Technical Suite, CorelCAD™, Corel® Painter®, Corel® PaintShop® Pro, Corel® VideoStudio®, and Corel® WordPerfect® Office. For more information on Corel, please visit www.corel.com.

Copyright © 2016 Corel Corporation. All rights reserved.

CorelDRAW® Graphics Suite X8 Reviewer's Guide

Corel, the Corel logo, the Corel Balloon logo, the Corel logo and the Corel Balloon logo combination (stacked and side-by-side), CorelDRAW, Capture, Connect, CorelCAD, Designs, Font Manager, Painter, PaintShop, PHOTO-PAINT, PowerTRACE, Smart Carver, Website Creator, WordPerfect and VideoStudio are trademarks or registered trademarks of Corel Corporation and/or its subsidiaries in the United States and/or other countries. Patents: www.corel.com/patent

All other trademarks or registered trademarks are the property of their respective owners.

Product specifications, pricing, packaging, technical support and information ("specifications") refer to the retail English version only. The specifications for all other versions (including other language versions) may vary.

INFORMATION IS PROVIDED BY COREL ON AN "AS IS" BASIS, WITHOUT ANY OTHER WARRANTIES OR CONDITIONS, EXPRESS OR IMPLIED, INCLUDING, BUT NOT LIMITED TO, WARRANTIES OF MERCHANTABILITY, SATISFACTORY QUALITY, MERCHANTABILITY OR FITNESS FOR A PARTICULAR PURPOSE, OR THOSE ARISING BY LAW, STATUTE, USAGE OF TRADE, COURSE OF DEALING OR OTHERWISE. THE ENTIRE RISK AS TO THE RESULTS OF THE INFORMATION PROVIDED OR ITS USE IS ASSUMED BY YOU. COREL SHALL HAVE NO LIABILITY TO YOU OR ANY OTHER PERSON OR ENTITY FOR ANY INDIRECT, INCIDENTAL, SPECIAL, OR CONSEQUENTIAL DAMAGES WHATSOEVER, INCLUDING, BUT NOT LIMITED TO, LOSS OF REVENUE OR PROFIT, LOST OR DAMAGED DATA OR OTHER COMMERCIAL OR ECONOMIC LOSS, EVEN IF COREL HAS BEEN ADVISED OF THE POSSIBILITY OF SUCH DAMAGES, OR THEY ARE FORESEEABLE. COREL IS ALSO NOT LIABLE FOR ANY CLAIMS MADE BY ANY THIRD PARTY. COREL'S MAXIMUM AGGREGATE LIABILITY TO YOU SHALL NOT EXCEED THE COSTS PAID BY YOU TO PURCHASE THE MATERIALS. SOME STATES/COUNTRIES DO NOT ALLOW EXCLUSIONS OR LIMITATIONS OF LIABILITY FOR CONSEQUENTIAL OR INCIDENTAL DAMAGES, SO THE ABOVE LIMITATIONS MAY NOT APPLY TO YOU.



Media Contact:
media@corel.com